

## Research Article

## Metformin Suppresses Colorectal Aberrant Crypt Foci in a Short-term Clinical Trial

Kunihiro Hosono<sup>1</sup>, Hiroki Endo<sup>1</sup>, Hirokazu Takahashi<sup>1</sup>, Michiko Sugiyama<sup>1</sup>, Eiji Sakai<sup>1</sup>, Takashi Uchiyama<sup>1</sup>, Kaori Suzuki<sup>1</sup>, Hiroshi Iida<sup>1</sup>, Yasunari Sakamoto<sup>1</sup>, Kyoko Yoneda<sup>1</sup>, Tomoko Koide<sup>1</sup>, Chikako Tokoro<sup>1</sup>, Yasunobu Abe<sup>1</sup>, Masahiko Inamori<sup>1</sup>, Hitoshi Nakagama<sup>2</sup>, and Atsushi Nakajima<sup>1</sup>

## Abstract

The biguanide metformin is widely used for treating diabetes mellitus. We previously showed the chemopreventive effect of metformin in two rodent models of colorectal carcinogenesis. However, besides epidemiologic studies, little is known about the effects of metformin on human colorectal carcinogenesis. The objective of this pilot study was to evaluate the chemopreventive effect of metformin on rectal aberrant crypt foci (ACF), which are an endoscopic surrogate marker of colorectal cancer. We prospectively randomized 26 nondiabetic patients with ACF to treatment with metformin (250 mg/d,  $n = 12$ ) or no treatment (control,  $n = 14$ ); 23 patients were evaluable for end point analyses (9 metformin and 14 control); the two groups were similar in ACF number and other baseline clinical characteristics. Magnifying colonoscopy determined the number of rectal ACF in each patient at baseline and after 1 month in a blinded fashion (as were all laboratory end point analyses). We also examined proliferative activity in colonic epithelium (via proliferating cell nuclear antigen labeling index) and apoptotic activity (via terminal deoxynucleotidyl transferase dUTP nick-end labeling). At 1 month, the metformin group had a significant decrease in the mean number of ACF per patient ( $8.78 \pm 6.45$  before treatment versus  $5.11 \pm 4.99$  at 1 month,  $P = 0.007$ ), whereas the mean ACF number did not change significantly in the control group ( $7.23 \pm 6.65$  versus  $7.56 \pm 6.75$ ,  $P = 0.609$ ). The proliferating cell nuclear antigen index was significantly decreased and the apoptotic cell index remained unaltered in normal rectal epithelium in metformin patients. This first reported trial of metformin for inhibiting colorectal carcinogenesis in humans provides preliminary evidence that metformin suppresses colonic epithelial proliferation and rectal ACF formation in humans, suggesting its promise for the chemoprevention of colorectal cancer. *Cancer Prev Res*; 3(9): 1077–83. ©2010 AACR.

## Introduction

Colorectal cancer (CRC) is a major neoplasm worldwide (1), and its prevalence and mortality have been increasing (2). A paradigm shift from surveillance for early detection of cancer or adenomas (polypectomy) to new preventive strategies, including chemoprevention, is needed to lower the burden of this disease. Several large epidemiologic and/or clinical studies have evaluated the possible effects of more than 200 agents, including fiber, calcium, and nonsteroidal anti-inflammatory drugs including aspirin and selective cyclooxygenase-2 (COX-2) inhibitors, in pro-

tecting against CRC development (3). Nonsteroidal anti-inflammatory drugs, especially COX-2 inhibitors alone or in combination, have shown the most promise for CRC risk reduction (4), but reports have revealed an increased risk of serious cardiovascular events associated with COX-2 inhibitor use (5, 6). In light of the adverse cardiovascular effects of otherwise effective COX-2 inhibitors and ineffective clinical results with other agents that had shown promise in this setting, novel drugs that would be both safe and effective are needed for CRC prevention. CRC is associated with lifestyle-related diseases such as diabetes and obesity (7–10), and these conditions might represent new targets for CRC chemoprevention.

Metformin (1,1-dimethylbiguanide hydrochloride) is a biguanide derivative that has been long and widely used for treating diabetes mellitus (11). It decreases basal glucose output by suppressing gluconeogenesis and glycogenolysis in the liver and by increasing glucose uptake in muscle tissue. Because metformin does not directly stimulate insulin secretion, the risk of hypoglycemia associated with its use is lower than that associated with the use of other oral antidiabetes drugs (12). The molecular mechanism of metformin involves liver kinase B1-dependent

**Authors' Affiliations:** <sup>1</sup>Division of Gastroenterology, Yokohama City University School of Medicine, Yokohama, Japan and <sup>2</sup>Biochemistry Division, National Cancer Center Research Institute, Chuo-ku, Tokyo, Japan

**Note:** Supplementary data for this article are available at Cancer Prevention Research Online (<http://cancerprevres.aacrjournals.org/>).

**Corresponding Author:** Atsushi Nakajima, Division of Gastroenterology, Yokohama City University School of Medicine, 3-9 Fukuura, Kanazawa-ku, Yokohama 236-0004, Japan. Phone: 81-45-787-2640; Fax: 81-45-787-8988; E-mail: nakajima-tyk@umin.ac.jp.

doi: 10.1158/1940-6207.CAPR-10-0186

©2010 American Association for Cancer Research.

activation of AMP-activated protein kinase (AMPK; ref. 13). Patients with type 2 diabetes taking metformin might be at a lower risk of cancer (including CRC) compared with those patients who do not take metformin (14, 15). This evidence suggests that metformin might be a candidate agent for the chemoprevention of CRC in diabetic patients.

Previously, we showed the chemopreventive effect of metformin in two rodent models of colorectal carcinogenesis: one a genetic cancer model, the other a chemically induced cancer model. We showed that metformin suppressed the development of intestinal polyps in adenomatous polyposis coli (APC<sup>Min/+</sup>) mice, a murine model of familial adenomatous polyposis (16). Furthermore, we showed that metformin suppressed the azoxymethane-induced formation of colorectal aberrant crypt foci (ACF) by activating AMPK (17). Both studies were performed in nondiabetic mice, suggesting the chemopreventive potential of metformin in nondiabetic patients. Little is known, however, about the effect of metformin on human colorectal carcinogenesis.

The end points of CRC chemoprevention trials are, in general, the incidence of polyps or of the cancer itself. These end points usually require several years of evaluation, and therefore such studies can be fraught with compliance issues and a high dropout rate. To overcome these problems, shorter-term surrogate markers for cancer could be used to advantage. ACF are tiny lesions that develop in the earliest stage of colorectal carcinogenesis and consist of large, thick crypts identified by dense methylene blue staining (18–21). ACF have been shown to be precursor lesions of the adenoma-carcinoma sequence in humans (22) and have been suggested as a suitable surrogate end point for CRC chemoprevention trials. Therefore, we conducted a prospective pilot clinical trial to evaluate the chemopreventive effects and safety of metformin against ACF formation in nondia-

betic patients. This is the first report of a clinical trial of metformin for inhibiting colorectal carcinogenesis in humans.

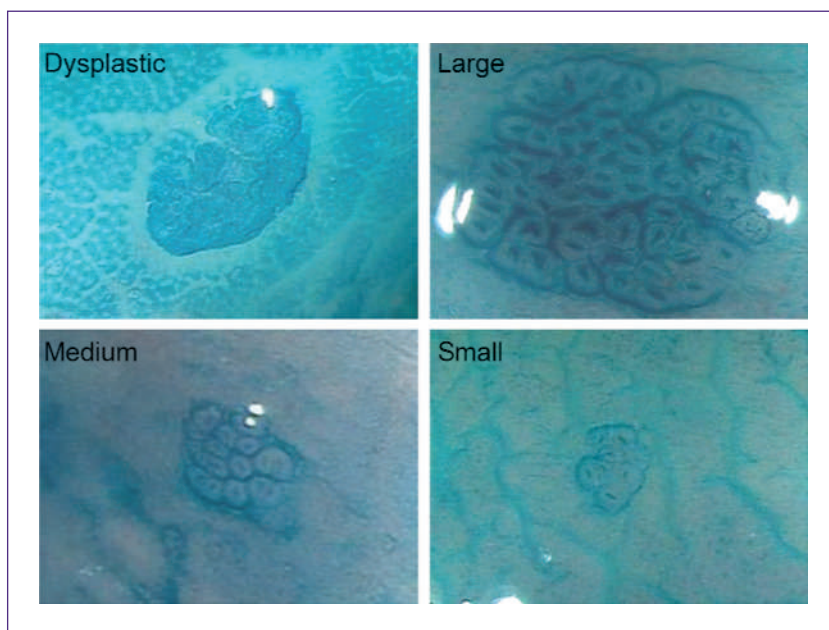
## Materials and Methods

### Patients and study design

Eligible patients had ACF determined by clinical and histologic criteria, did not have diabetes, and had a medical history and physical examination indicating that they were in acceptable health and had no severe systemic diseases that could affect the results of a colonoscopic examination. Major exclusion criteria included the following conditions: liver or renal dysfunction, pregnancy, history of drug allergy, lactic acidosis or colorectal cancer, and current nonsteroidal anti-inflammatory drug use. Eligible participants were randomized to metformin (250 mg/d) or control (untreated) groups. Each participant was treated (metformin) or followed (control/untreated) for 1 month by protocol, and the number of ACF per patient in the two groups was examined by magnifying colonoscopy before and after 1 month of study. The study was conducted in accordance with the Declaration of Helsinki (revised 1989) and with the approval of the Ethics Committee of Yokohama City University School of Medicine. Each participant provided written informed consent for study participation and the use of their data for research purposes.

### Magnifying endoscopy and criteria for endoscopic diagnosis

Bowel preparation for colonoscopy was carried out using polyethylene glycol solution. A Fujinon EC-590ZW/M-H colonoscope was used to perform the magnifying colonoscopy (Fujinon Toshiba ES Systems, Co., Ltd.). Total colonoscopy was performed before imaging of the rectal



**Fig. 1.** Endoscopic features of ACF, as defined in Materials and Methods. Dysplastic, small, medium, and large ACF are shown.

**Table 1.** Baseline clinical patient characteristics

	Metformin	Control	P
No. of patients	9	14	NS
Male/female	8:1	12:2	NS
Age (y)*	69.1 ± 5.95	64.2 ± 90.7	NS
BMI (kg/m <sup>2</sup> )*	23.7 ± 3.21	24.3 ± 3.74	NS
HbA1c (%)*	5.8 ± 1.01	5.4 ± 0.56	NS
Adenomas (n, %)	4 (44.4)	6 (42.8)	NS
ACF (mean number per patient)*	8.78 ± 6.45	7.23 ± 6.65	NS

Abbreviations: NS, nonsignificant; BMI, body mass index; HbA1c, hemoglobin A1c.

\*Data are expressed as mean ± SD.

ACF. Subsequently, 0.25% methylene blue was applied to the mucosa with a spray catheter, as described previously (22). Methylene blue was applied to the lower rectal region extending from the middle Houston valve to the dentate line. Lesions consisting of large, thick crypts in the methylene blue-stained regions of the colon were defined as ACF (19–21). Dysplastic ACF were defined as crypts in which each lumen was compressed or not distinct, with an epithelial lining that was much thicker than that of the normal surrounding crypts (21). Similarly, ACF were classified according to the number of crypts per focus (small, 1 to 9 crypts; medium, 10 to 19 crypts; and large, 20 crypts or more per focus; ref. 22; Fig. 1). All ACF were recorded photographically and evaluated by two independent observers (H. Takahashi

and K. Hosono), who were blinded to the clinical history and study group of the patients.

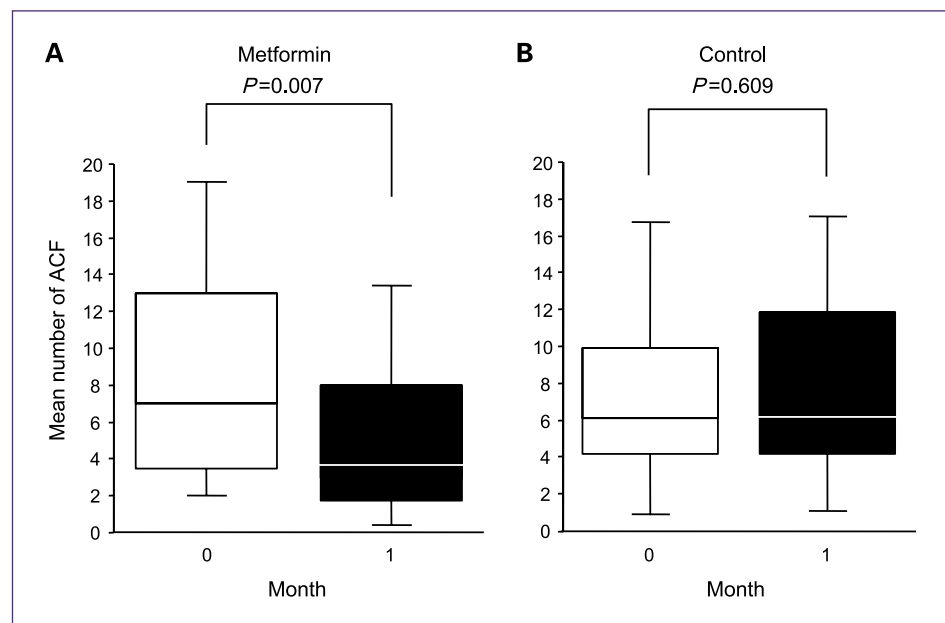
### Insulin resistance and plasma lipid levels

Metformin is widely used as an antidiabetes drug that improves insulin resistance. Therefore, we investigated the effect of metformin on insulin resistance and plasma lipid level by comparing these end points at baseline and after 1 month within the metformin group; the analyses were blinded as to the timing of the sample. The plasma levels of fasting glucose, insulin, cholesterol, and triglyceride were measured using an ELISA kit (Wako Pure Chemical). The degree of insulin resistance, as represented by the homeostasis model assessment of insulin resistance (HOMA-IR), was investigated (23); HOMA-IR was calculated using the following formula: HOMA-IR fasting = plasma immunoreactive insulin (μU/mL) × fasting plasma glucose (mg/dL)/405.

### Assays for cell proliferative and apoptotic activities in rectal epithelium

To evaluate the effects of metformin on cell proliferative and apoptotic activities in rectal epithelium, we used immunohistochemical techniques, and the analyses, which compared baseline to 1-month results within the metformin group, were blinded as to the timing of the samples. Proliferative activity was evaluated by staining for the proliferative cell nuclear antigen (PCNA), and apoptotic activity was evaluated by the terminal deoxynucleotidyl transferase-mediated dUTP-biotin nick-end labeling (TUNEL) method. Colonic epithelial samples were obtained from the same trial patients by biopsy before and after metformin treatment. Samples embedded in paraffin were sectioned at 4 μm thickness

**Fig. 2.** Metformin effect on ACF. A, the mean number of rectal ACF per patient was significantly decreased at 1 mo (versus at baseline) in the metformin group. B, in contrast, the mean number of ACF per patient remained similar at 1 mo (versus at baseline) in the control group. Data are presented in a box-and-whisker plot. Each box includes the mean of all results falling between the 25th and 75th percentiles, and the median value is represented as a horizontal line inside each box.



and mounted on slides coated with polylysine. Sections were deparaffinized in xylene and dehydrated through a series of graded alcohol solutions. Inhibition of endogenous peroxidase activity was performed with 3% hydrogen peroxide. The blocking of nonspecific interaction was accomplished by incubating the samples with a serum block for 30 minutes at room temperature. Sections were then incubated overnight at 4°C with the primary antibody, PCNA mouse monoclonal antibody (no. 2586, 1:4,000 dilution; Cell Signaling Technology). The antibody was applied to the sections and incubated with Histofine simple stain max PO kit for 30 minutes (Nichirei Laboratories), in accordance with the instructions of the manufacturer. The signals were counterstained with hematoxylin and visualized with diaminobenzidine (peroxidase substrate kit; Vector Laboratories). Six random microscopic fields per sample of ~250 cells were counted at a magnification of  $\times 400$  using a bright-field microscope. Results were expressed as the percentage of positively stained cells.

Cells were assessed for apoptosis by staining with a TUNEL staining kit, in accordance with the instructions of the manufacturer (Wako Pure Chemical). The apoptotic index (percentage of cells showing positive TUNEL staining relative to the total number of cells) was determined similarly to PCNA results.

### Statistical analysis

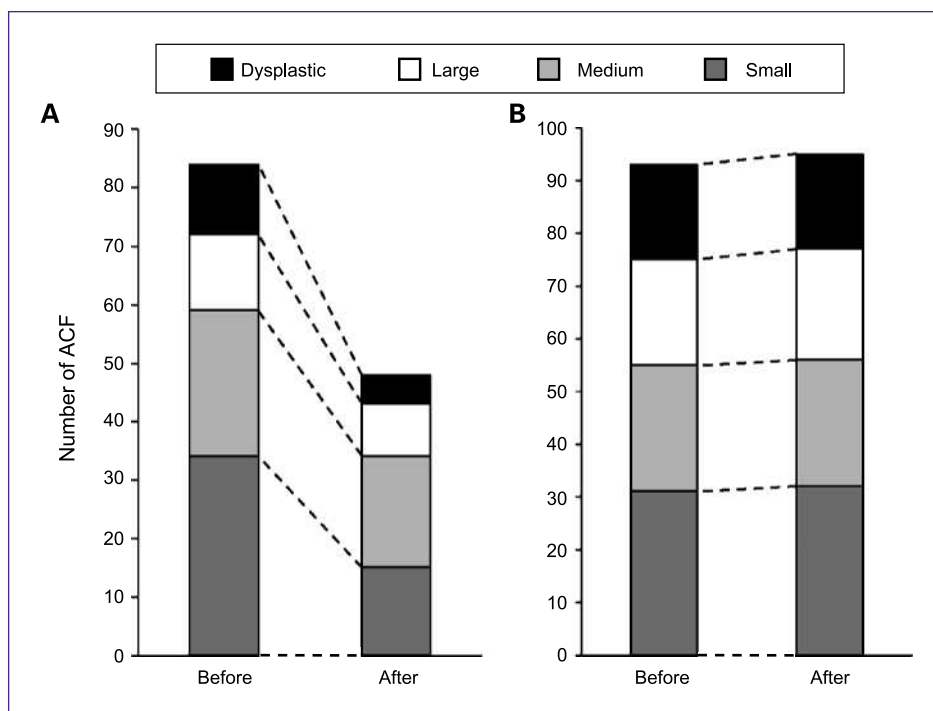
Data were expressed as mean  $\pm$  SD, unless otherwise indicated. All comparative results involve within-group comparisons of baseline with 1 month data in the metformin or control group (for ACF) or within the metformin group (for laboratory end points). The statistical significance was

determined using a paired or unpaired *t* test using the Stat-View software (SAS Institute, Inc.). *P* < 0.05 was considered as denoting statistical significance.

## Results

### Patient characteristics

Trial recruitment and conduct took place between July 2008 and May 2010 at the Yokohama City University School of Medicine (UMIN clinical trial registry 000001241). During this period, 1342 patients were screened in our colorectal neoplasia screening clinic, and 629 patients had ACF and were assessed for trial eligibility. ACF occurred in 80.9% (430/531) of patients also found to have adenomas and in 24.5% (199/811) of patients without adenomas (*P* < 0.001), showing an association of ACF with presence of adenomas. Of the 629 ACF patients, 402 refused to participate and 201 were ineligible (Supplementary Fig. S1). Reasons for exclusion were NSAID use (54.7%), liver dysfunction (cirrhosis, hepatitis, elevated enzymes; 30.8%), renal dysfunction (e.g., elevated creatinine; 10.5%), pregnancy (1.5%), CRC (1.5%), and drug allergy (1.0%). Patients with adenomas removed during screening colonoscopy were eligible. Therefore, we prospectively randomized 26 eligible nondiabetic patients with ACF into the trial—12 into the metformin group and 14 into the control group. In the metformin group, one patient stopped treatment early and did not have a follow-up colonoscopy and two refused follow-up colonoscopy, leaving nine metformin group patients who were included in our end point analyses. Baseline patient characteristics



**Fig. 3.** The size and dysplasia distribution of ACF before (baseline) and after 1 mo in the two study groups. The overall numbers of small and dysplastic ACF were reduced by half in the metformin group (A); no significant changes occurred in the control (no treatment) group (B) in the distribution of dysplastic or large, medium, and small ACF. The dotted lines reflect the magnitude (or relative lack) of change.



**Table 2.** Changes in serum laboratory data and ACF number in the metformin group between baseline and 1 mo of treatment

	Before*	After*	P
Blood glucose (mg/dL)	104.8 ± 14.5	101.3 ± 13.4	NS
HbA1c (%)	5.8 ± 1.01	5.7 ± 0.82	NS
HOMA-IR	1.21 ± 1.13	1.20 ± 0.586	NS
Total cholesterol (mg/dL)	179.2 ± 63.8	179.0 ± 66.2	NS
Triglyceride (mg/dL)	112.5 ± 29.8	107.0 ± 41.2	NS
ACF (mean number per patient)	8.78 ± 6.45	5.11 ± 4.99	0.007

Abbreviations: NS, nonsignificant; HbA1c, hemoglobin A1c.

\*Data are expressed as mean ± SD.

were similar between the two study groups (Table 1), including the mean numbers of ACF per patient ( $8.78 \pm 6.45$  metformin and  $7.23 \pm 6.65$  control).

#### Effect of metformin on ACF formation

In the metformin group, the mean number of ACF per patient decreased significantly from  $8.78 \pm 6.45$  (baseline) to  $5.11 \pm 4.99$  (at 1 month,  $P = 0.007$ ). In contrast, there was no significant change in the mean number of ACF per patient in the control group ( $7.23 \pm 6.65$  baseline versus  $7.56 \pm 6.75$  at 1 month,  $P = 0.609$ ; Fig. 2). Regarding size and dysplasia distributions of ACF, the mean numbers of small and dysplastic ACF were reduced by half in the metformin group between baseline and the 1-month

follow-up, whereas size and dysplasia distribution did not change significantly in the control group (Fig. 3).

#### Effect of metformin on insulin resistance and plasma lipid levels

Our HOMA-IR analysis found no significant differences in blood glucose levels or degree of insulin resistance in the metformin group between baseline and 1 month of treatment (Table 2). There were also no significant differences in the metformin group in plasma cholesterol or triglyceride levels between baseline and 1 month of treatment.

#### Effects of metformin on rectal epithelial cell proliferation

To gain insight into the mechanism of suppressive metformin effects on ACF, we investigated the PCNA labeling index of proliferative activity in the rectal epithelium. The PCNA index decreased significantly in the metformin group between baseline and the 1 month follow-up (Fig. 4A and B).

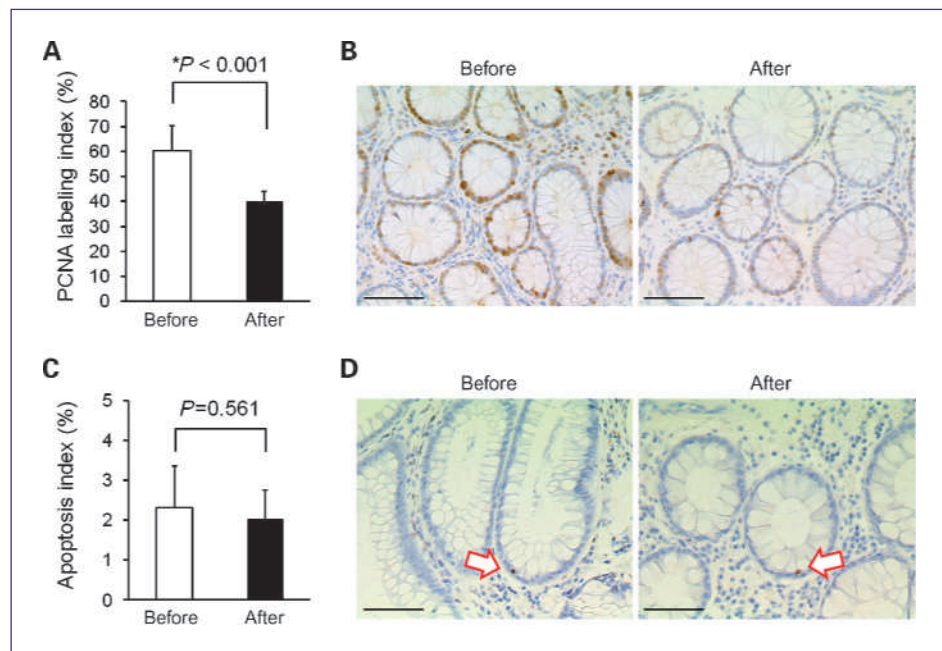
#### Effects of metformin on apoptotic activity in rectal epithelium

To investigate whether metformin induced apoptosis, we performed TUNEL staining of the rectal epithelium. Metformin did not significantly alter the percentage of apoptotic cells in the metformin group between baseline and at 1 month of treatment (Fig. 4C and D).

#### Drug safety

Metformin at a low dose of 250 mg/d did not produce any side effects, including lactic acidosis, hypoglycemia, or diarrhea in this 1-month study.

**Fig. 4.** PCNA staining to determine cell proliferation and TUNEL staining to determine apoptosis in the metformin group. The average PCNA index (A) and apoptotic index (C) are expressed as a percentage of positively stained nuclei out of the total number of nuclei counted; the indexes are indicated at baseline (open columns labeled "before") and after 1 mo (solid columns labeled "after"). Columns, mean; bars, SE. Representative immunohistochemical staining for PCNA (B) and TUNEL (D) is shown before and after 1 mo of study. The small dark spots indicated by arrows in D are apoptosed nuclei. The PCNA index was significantly decreased after versus before metformin treatment (A and B), whereas metformin did not induce any significant change in the percentage of apoptotic cells (C and D). Bars, 100  $\mu$ m (B and D).



## Discussion

The present study clearly shows that metformin suppressed the formation of human colorectal ACF. Furthermore, metformin (at this study's dose for 1 mo), did not decrease blood glucose or affect insulin resistance, plasma cholesterol, or plasma triglyceride levels of nondiabetic ACF patients, indicating that the ACF suppression effect was direct rather than due to the attenuation of insulin resistance or hyperlipidemia.

We examined the potential direct effects of metformin on ACF via PCNA immunostaining for colorectal cell proliferative activity and TUNEL for apoptosis. The PCNA index decreased significantly following metformin treatment, although the apoptotic index did not change significantly. These data suggest that metformin effects in suppressing cell proliferation mediate suppressive effects on ACF formation.

Metformin activates AMPK, which inhibits the mammalian target of rapamycin (mTOR) pathway (13). The mTOR pathway plays an important role in protein translational machinery and cell proliferation (24). Inhibition of the mTOR pathway might be a direct mechanism of ACF suppression. The best-characterized downstream effector of mTOR is S6 kinase, which regulates the initiation and elongation phases of translation (25). Activation of the mTOR pathway accelerates cell cycle progression from G<sub>1</sub> to S in CRC DLD-1 cells (26). Therefore, AMPK activation may lead to the inhibition of cell growth and proliferation as a result of suppressed protein synthesis and thus might have a potent antiproliferative effect. Recent evidence indicates that metformin has a suppressive effect on tumorigenesis and cancer cell growth (27–29). Metformin activated AMPK and consequently decreased cellular proliferative activity and produced a general decrease in protein synthesis *in vitro* in human breast carcinoma cells (27). Metformin also inhibited the proliferation of human prostate cancer cells (29). Our group has shown that mTOR inhibition with rapamycin reduced ACF formation in adiponectin-deficient mice under high-fat diet conditions (30).

We previously showed that metformin suppressed intestinal polyp growth in APC<sup>Min/+</sup> mice (16) and colorectal ACF formation in a chemical carcinogen-induced murine model (17). We clarified that the molecular mechanism of ACF suppression was the inhibition of the mTOR pathway by the metformin-mediated activation of AMPK, which consequently led to the suppression of cellular proliferation (17). The present study extended these murine model

studies to the human clinical setting, in which metformin also suppressed colorectal ACF formation. The relevance of ACF to the adenoma-carcinoma sequence in humans (22) and thus to CRC prevention is strengthened by our patient data showing that ACF were significantly associated with adenomas in the overall population of screened patients.

Metformin was re-evaluated as an antidiabetes drug with a cardioprotective effect based on evidence showing that the incidence of cardiovascular events was significantly lower in diabetics taking metformin than those taking other diabetes drugs (31). Our results similarly suggest that metformin should be re-evaluated as an antidiabetes drug with a chemopreventive effect against CRC. Our pilot trial, the first reported clinical study of the inhibitory effect of metformin on colorectal carcinogenesis, has shown that metformin, at 250 mg/d for 1 month, safely and directly suppressed both colorectal epithelial proliferation and ACF formation, supporting further, larger-scale studies of metformin in small doses for CRC chemoprevention in diabetic or nondiabetic patients. Determining some important issues, such as the potential optimal dose, schedule, and duration, will be necessary prior to conducting a long-term clinical trial of metformin for preventing colorectal polyps or cancer.

## Disclosure of Potential Conflicts of Interest

No potential conflicts of interest were disclosed.

## Acknowledgments

We thank Machiko Hiraga for her technical assistance.

## Grant Support

A Grant-in-Aid for research on the Third-Term Comprehensive Control Research for Cancer from the Ministry of Health, Labour and Welfare, Japan (A. Nakajima), a grant from the National Institute of Biomedical Innovation (NBIO; A. Nakajima), a grant from the Ministry of Education, Culture, Sports, Science and Technology, Japan (KIBAN-B; A. Nakajima), a grant from the Yokohama Foundation for Advancement of Medical Science (K. Hosono), and the grant program "Collaborative Development of Innovative Seed" from the Japan Science and Technology Agency.

The costs of publication of this article were defrayed in part by the payment of page charges. This article must therefore be hereby marked *advertisement* in accordance with 18 U.S.C. Section 1734 solely to indicate this fact.

Received 08/05/2010; revised 08/14/2010; accepted 08/17/2010; published online 09/01/2010.

## References

1. Jemal A, Siegel R, Xu J, Ward E. Cancer statistics, 2010. *CA Cancer J Clin* 2010 [Epub ahead of print].
2. Anderson WF, Umar A, Brawley OW. Colorectal carcinoma in black and white race. *Cancer Metastasis Rev* 2003;22:67–82.
3. Das D, Arber N, Jankowski JA. Chemoprevention of colorectal cancer. *Digestion* 2007;76:51–67.
4. Gupta RA, Dubois RN. Colorectal cancer prevention and treatment by inhibition of cyclooxygenase-2. *Nat Rev Cancer* 2001;1:11–21.
5. Psaty BM, Furberg CD. COX-2 inhibitors—lessons in drug safety. *N Engl J Med* 2005;352:1133–5.
6. Meyskens FL, Jr., McLaren CE, Pelot D, et al. Difluoromethylornithine plus sulindac for the prevention of sporadic colorectal adenomas: a

- randomized placebo-controlled, double-blind trial. *Cancer Prev Res* 2008;1:32–8.
7. Limburg PJ, Anderson KE, Johnson TW, et al. Diabetes mellitus and subsite-specific colorectal cancer risks in the Iowa Women's Health Study. *Cancer Epidemiol Biomarkers Prev* 2005;14:133–7.
  8. Larsson SC, Giovannucci E, Wolk A. Diabetes and colorectal cancer incidence in the cohort of Swedish men. *Diabetes Care* 2005;28:1805–7.
  9. Giovannucci E, Ascherio A, Rimm EB, Colditz GA, Stampfer MJ, Willett WC. Physical activity, obesity, and risk for colon cancer and adenoma in men. *Ann Intern Med* 1995;122:327–34.
  10. Frezza EE, Wachtel MS, Chiriva-Internati M. Influence of obesity on the risk of developing colon cancer. *Gut* 2006;55:285–91.
  11. Witters LA. The blooming of the French lilac. *J Clin Invest* 2001;108:1105–7.
  12. Bodmer M, Meier C, Krähenbühl S, et al. Metformin, sulfonylureas, or other antidiabetes drugs and the risk of lactic acidosis or hypoglycemia: a nested case-control analysis. *Diabetes Care* 2008;31:2086–91.
  13. Shaw RJ, Lamina KA, Vasquez D, et al. The kinase LKB1 mediates glucose homeostasis in liver and therapeutic effects of metformin. *Science* 2005;310:1642–6.
  14. Libby G, Donnelly LA, Donnan PT, Alessi DR, Morris AD, Evans JM. New users of metformin are at low risk of incident cancer: A cohort study among people with type 2 diabetes. *Diabetes Care* 2009;32:1620–5.
  15. Currie CJ, Poole CD, Gale EA. The influence of glucose-lowering therapies on cancer risk in type 2 diabetes. *Diabetologia* 2009;52:1766–77.
  16. Tomimoto A, Endo H, Sugiyama M, et al. Metformin suppresses intestinal polyp growth in *ApcMin/+* mice. *Cancer Sci* 2008;99:2136–41.
  17. Hosono K, Endo H, Takahashi H, et al. Metformin suppresses azoxymethane-induced colorectal aberrant crypt foci by activating AMP-activated protein kinase. *Mol Carcinog* 2010;49:662–71.
  18. Bird RP. Role of aberrant crypt foci in understanding the pathogenesis of colon cancer. *Cancer Lett* 1995;93:55–71.
  19. Pretlow TP, Barrow BJ, Ashton WS, et al. Aberrant crypts: putative preneoplastic foci in human colonic mucosa. *Cancer Res* 1991;51:1564–7.
  20. Pretlow TP, O'Riordan MA, Pretlow TG, Stellato TA. Aberrant crypts in human colonic mucosa: putative preneoplastic lesions. *J Cell Biochem Suppl* 1992;16G:55–62.
  21. Roncucci L, Stamp D, Medline A, Cullen JB, Bruce WR. Identification and quantification of aberrant crypt foci and microadenomas in the human colon. *Hum Pathol* 1991;22:287–94.
  22. Takayama T, Katsuki S, Takahashi Y, et al. Aberrant crypt foci of the colon as precursors of adenoma and cancer. *N Engl J Med* 1998;339:1277–84.
  23. Matthews DR, Hosker JP, Rudenski AS, Naylor BA, Treacher DF, Turner RC. Homeostasis model assessment: insulin resistance and  $\beta$ -cell function from fasting plasma glucose and insulin concentrations in man. *Diabetologia* 1985;28:412–9.
  24. Sarbassov DD, Ali SM, Sabatini DM. Growing roles for the mTOR pathway. *Curr Opin Cell Biol* 2005;17:596–603.
  25. Mamane Y, Petroulakis E, LeBacquer O, Sonenberg N. mTOR, translation initiation and cancer. *Oncogene* 2006;25:6416–22.
  26. Aoki K, Tamai Y, Horiike S, Oshima M, Taketo MM. Colonic polyposis caused by mTOR-mediated chromosomal instability in *Apc<sup>+/Delta716</sup>Cdx2<sup>+/-</sup>* compound mutant mice. *Nat Genet* 2003;35:323–30.
  27. Zakikhani M, Dowling R, Fantus IG, Sonenberg N, Pollak M. Metformin is an AMP kinase-dependent growth inhibitor for breast cancer cells. *Cancer Res* 2006;66:10269–73.
  28. Ben Sahra I, Laurent K, Loubat A, et al. The antidiabetic drug metformin exerts an antitumoral effect *in vitro* and *in vivo* through a decrease of cyclin D1 level. *Oncogene* 2008;27:3576–86.
  29. Algire C, Amrein L, Zakikhani M, Panasci L, Pollak M. Metformin blocks the stimulative effect of a high-energy diet on colon carcinoma growth *in vivo* and is associated with reduced expression of fatty acid synthase. *Endocr Relat Cancer* 2010;17:351–60.
  30. Fujisawa T, Endo H, Tomimoto A, et al. Adiponectin suppresses colorectal carcinogenesis under the high-fat diet condition. *Gut* 2008;57:1531–8.
  31. Scarpello JH. Improving survival with metformin: the evidence base today. *Diabetes Metab* 2003;29:6S36–43.

# Cancer Prevention Research

## Metformin Suppresses Colorectal Aberrant Crypt Foci in a Short-term Clinical Trial

Kunihiro Hosono, Hiroki Endo, Hirokazu Takahashi, et al.

*Cancer Prev Res* 2010;3:1077-1083. Published OnlineFirst September 1, 2010.

<b>Updated version</b>	Access the most recent version of this article at: doi: <a href="https://doi.org/10.1158/1940-6207.CAPR-10-0186">10.1158/1940-6207.CAPR-10-0186</a>
<b>Supplementary Material</b>	Access the most recent supplemental material at: <a href="http://cancerpreventionresearch.aacrjournals.org/content/suppl/2010/09/01/1940-6207.CAPR-10-0186.DC1">http://cancerpreventionresearch.aacrjournals.org/content/suppl/2010/09/01/1940-6207.CAPR-10-0186.DC1</a> <a href="http://cancerpreventionresearch.aacrjournals.org/content/suppl/2010/09/01/1940-6207.CAPR-10-0186.DC2">http://cancerpreventionresearch.aacrjournals.org/content/suppl/2010/09/01/1940-6207.CAPR-10-0186.DC2</a>

<b>Cited articles</b>	This article cites 30 articles, 11 of which you can access for free at: <a href="http://cancerpreventionresearch.aacrjournals.org/content/3/9/1077.full.html#ref-list-1">http://cancerpreventionresearch.aacrjournals.org/content/3/9/1077.full.html#ref-list-1</a>
<b>Citing articles</b>	This article has been cited by 27 HighWire-hosted articles. Access the articles at: <a href="http://cancerpreventionresearch.aacrjournals.org/content/3/9/1077.full.html#related-urls">/content/3/9/1077.full.html#related-urls</a>

<b>E-mail alerts</b>	<a href="#">Sign up to receive free email-alerts</a> related to this article or journal.
<b>Reprints and Subscriptions</b>	To order reprints of this article or to subscribe to the journal, contact the AACR Publications Department at <a href="mailto:pubs@aacr.org">pubs@aacr.org</a> .
<b>Permissions</b>	To request permission to re-use all or part of this article, contact the AACR Publications Department at <a href="mailto:permissions@aacr.org">permissions@aacr.org</a> .